

Lean Tool Management

The *WinTool* Base Module is the state of the art solution for the effective organization of tools and production equipment. The solution significantly improves the results in production planning, NC programming, tool setup, inventory management, and best usage of tools. *WinTool* expansion modules integrate CAM, presetters, storage lifts, ERP and PLM system. With *WinTool* you can re-engineer the way you have been working with tools and manage even the most complex situations with ease and reliability.

Highlights

Tool Library

- Network database solution for tools, production equipment, and (optionally) NC files
- Runs with SQL Server, Access or Oracle (optional)
- Cutting conditions and expert module
- Tool manufacturer catalogs
- Free viewer licenses

Tool Graphics

- 2D tool DXF generator
- Automatic 2D graphic tool assembly
- 3D rotating tool model generator
- 3D model manager for CAM
- Vector CAD system included

Documentation

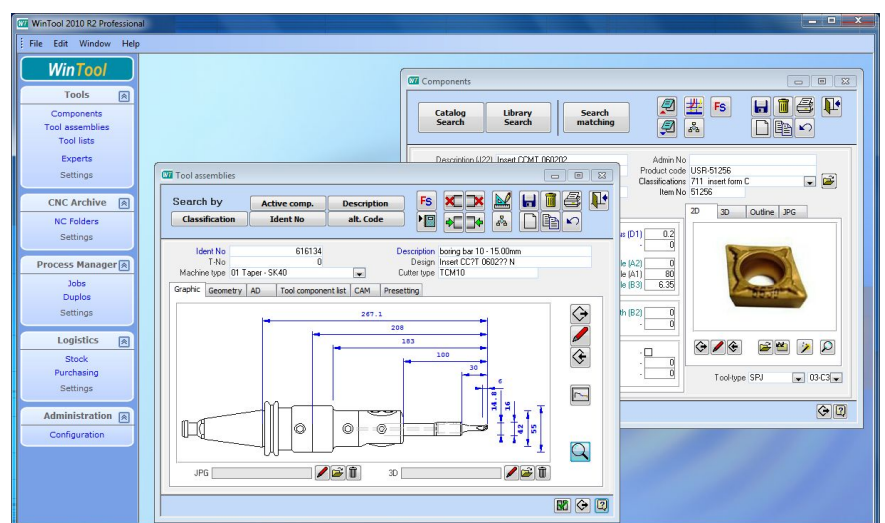
- Report generator for prints and data export for most known file types.

Expansion Modules

- Misc. Interfaces for CAM, presetting gauges, storage lifts, and ERP/PLM
- Tool crib management
- NC file management
- Release and Revision Control
- *WinTool* Report Designer

Requirements

- Windows XP, Vista, 7, x64.



Main Objectives

- Easily record tools with consistent guidelines, geometry, ID number and find them anywhere in the shop.
- Easily specify new tool assemblies and generate documentation automatically.
- Easily create tool lists for planning, presetting, measuring, and machine setup.
- Easily access any current and historic tool data on each client in the network.

Your Benefits

- Tool data maintenance in ONE database eliminates communication chaos and allows automatic generation of detailed tool reports and lists
- Quick selection of most suitable tools and cutting conditions
- Transparent tool usage and improved tool technology (cutting conditions)
- Less machine standstill due to tool setup problems
- Effective tooling from purchasing to programmer to machine operator

Being Used Successfully Every Day



«WinTool was a strategic necessity for our company because workflow documentation is a prerequisite for quick growth. The workers liked the software for its practicality and intuitive user interface.»

Daniel Odermatt (Lean Management Project Manager), Synthes, Schweiz



«With WinTool the quality of our work has improved and we reduced the time required for NC programming. The problems we had in tool setup are completely gone now.»

Michael Debras (CAM Engineering Manager), Goodyear SA, Luxembourg



«Prior to WinTool it was often not clear to the workers, how the tools should be setup for the NC programs and which instructions are mandatory. WinTool makes it transparent and it is easy to use.»

Fredrik Hagglund (Production Manager), Atlas Copco Construction, Schweden



«WinTool is the key stone of doing many things. It is the beginning of improvements such as using the tools better, improve programming, integrate the presetting gauge in the process ... , and so on.»

NC engineering team at Woodward Governor Aircraft Engine Systems, USA