

Highlights *WinTool* 2011

The modernisation of the WinTool user interface including the integration of the CNC Archive application within the database has vastly improved and simplified the work flow, configuration and maintenance operations.

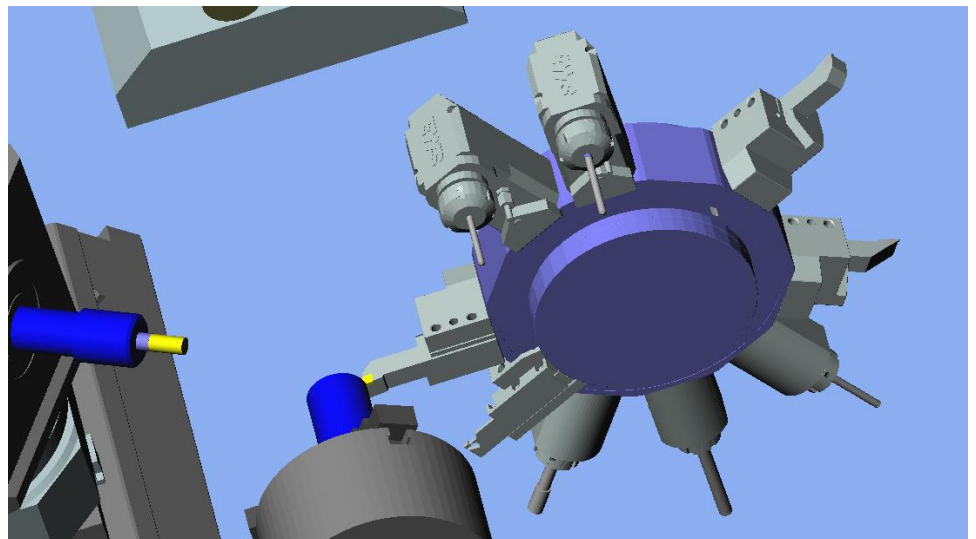
We recommend that you contact your *WinTool* sales agent to support you with the installation and commissioning of the latest updates to benefit from the new capabilities that will simplify and improve your organizational processes.



Turning Tools - made easier then ever !

Reference-Turning Tools

The new Database template covers a multiple of lathe tooling examples which also includes 3D CAD models. Correct tool orientation and positioning within CAM applications is achieved easily without having to study operating manuals.



Tooling reports are fast, flexible, and concise

Swifter and better printing

The report module creates printouts and exports them to various formats including PDF and office files. The version 2010/2011 can process large amounts of data much faster. User definable reports can be created with the optional report generator.

The screenshot displays the WinTool Reporting window. On the left is a tree view of the report structure, including folders for Components, Tool assemblies, Tool lists, NC Folders, Process module, Stock, and Administration. The main window shows a 'Tool list' report with the following details:

- Report Header:** 100 1050 - 20 C_Meas. Equip. A measuring equip. | Side frame left O-1113-M1 | 24/06/2010 Aluminium
- Item T 1:** 710001, caliper, 0.05 mm. Includes a table with 3 rows of caliper components and a 300mm caliper image.
- Item T 2:** 710002, Micrometer, 0.01 mm. Includes a table with 1 row of micrometer components and a micrometer image.

Quantity	Component	Item No
1	caliper	51304
1	caliper	51303
1	caliper	51308

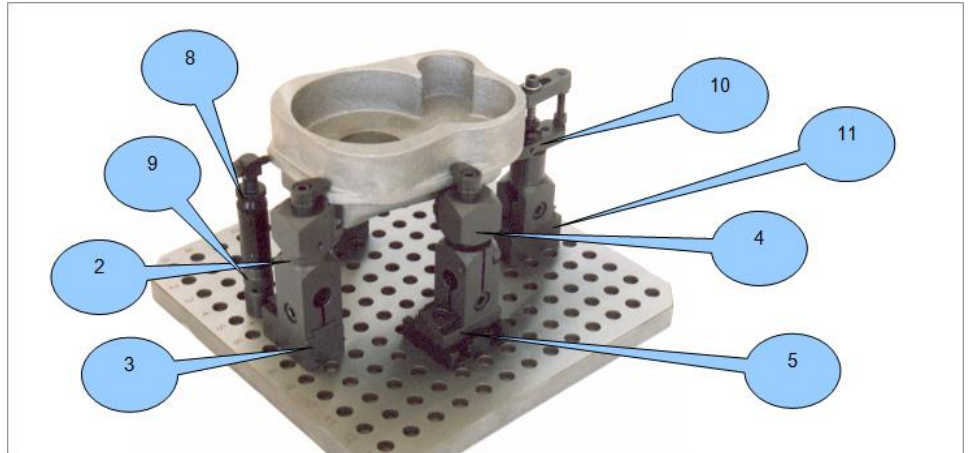
Quantity	Component	Item No
1	Micrometer	51309



CNC Archive - now integrated as a compact version

CNC-Archive 2011

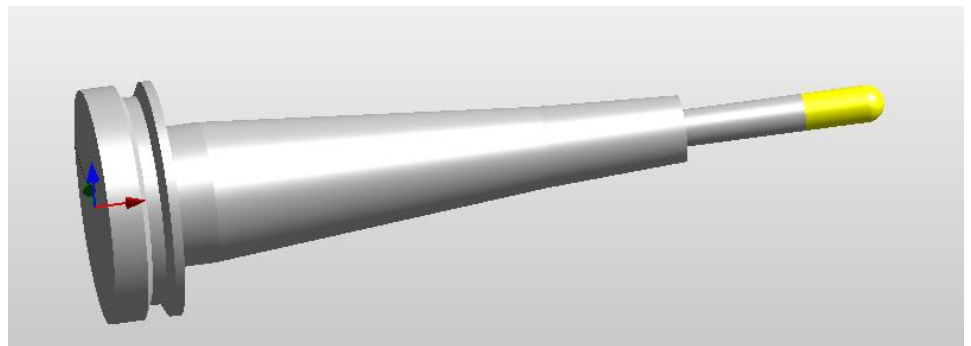
Organisation of different CNC program versions, lists and instructions are based upon the same database structure as the WinTool tool library. The free compact version of CNC Archive is now available.



DXF Generator - fast - simple - powerful

More options:

HOLDERS with several conical steps are new within the DXF generator to support the CAM interfaces. The DXF generator is now included at no extra cost in the Wintool standard package.



Simple and secure information management

Flexible user interface:

To secure a smooth operational work-flow and functionality; permission rights are assigned and support individual users and user groups. Support of user groups is extensively simplified; active directories and thin client policies are now integrated.

