

## WinTool 2009 SP4 (December 2009)

### Update from older Versions

- *WinTool* 2009 software can be used simultaneously with *WinTool* 2008 for testing
- When relinking *WinTool* 2009 with the old database the DBManager Module will make the needed changes. The database structure then isn't compatible with *WinTool* 2008 anymore. (Make backup first)
- Older Versions can later be removed within the Windows Control Panel
- Backup the files WTCfg.ini, WTComp.xml and if necessary WT-Presetting definition files before the installation to be able to use them in the new Installation

### New Installation

- Run "Start.exe" and install the selected *WinTool* modules one after another.
- When you start *WinTool* for the first time a security warning appears (only the first time). The integrated *WinTool* Security-Certificate guaranties that DATOS Computer is the originator of the software code. Please check the box and click on "Open".  
If you started up Access for the first time, you will be asked if you want to block "Unsecure Code" – you can answer this with "Yes".
- When you start up *WinTool* again, the "DB-Manager" automatically links the software components of your local installation with the WTData-database in the local installation path and shuts *WinTool* down again.
- Install or update your copy-protection. If you use a floating licensing system you must install the Sentinel driver Version 7.4 or 7.5 on the client and on the server.

### Installation in the Network (Update)

- After you have successfully installed *WinTool* on all local computers, you must relink them with the "productive database" by using the DB-Manager on each local seat again. The Database structure will be upgraded and will not be compatible with *WinTool* 2008 anymore
- In the next step you need to import the DATOS catalog into *WinTool* from the *WinTool* CD in order to update the labelling of all masks
- In case you are using your own ACCESS print reports (WTUser32.mdb), you need to relink them with the productive database using the DBManager as well: If you are using a shared WTUser32.mdb on the network, you need to relink it with a local installation and the "productive database"
- For additionally licensed modules you will have to enter the appropriate license code into the file WTCfg.ini in the *WinTool* installation folder
- If you used a custom layer-configuration, you will have to reconfigure this for *WinTool* 2009. Do not use your old configuration file, because the new WTComp.xml file supports additional functions (see *WinTool*-Help)
- In case you used *WinTool* user accounts, you have to assign the file "system.mdw" you used for your old installation
- When using WT-Presetting module, you will have to copy your user defined Presetting-Definitions into *WinTool* 2009 installation directory

### System Requirements

System Software:	Windows 2000 / XP / Vista / optional X64
Supported MS SQL Server:	MS SQL Server 2000, MSDE 2000 MS SQL Server 2005, MS SQL Server 2005 Express MS SQL Server 2008, MS SQL Server 2008 Express
Oracle	10g XE (optional)
Supported Access:	MS Access 2003 and Access 2003 Runtime

## **WinTool 2009 SP4**

### **Technology**

- ü #2221: Old cutting data shown for components again
- ü #2224: Other values change again if "S" is changed
- ü #2225: Reasonable message when choosing not installed Expert
- ü Closing selection form when choosing expert

### **Expert**

- ü #2222: Now working with comma as decimal separator (WR, 03.12.09)
- ü #2223: Not calculating for selected assembly when started for components
- ü Better readable user interface

### **Tool Assemblies**

- ü #2229: Presetting radius now taken from same field as assembly's radius
- ü #2230: Correctly calculated X value for presetting lathe tools (Wika, 02.12.09)
- ü #2231: Possibility to start a program directly out of tools window (WR, 09.12.09)

### **Presetting**

- ü Advanced documentation and configuration samples

### **General**

- ü #2227: Caught possible crash when starting WinTool
- ü Revised Help
- ü #2237: Automatically adding current user on startup (Illig, 11.12.09)

## **WinTool 2009 SP3**

### **Logistics**

- ü #2151: Better display of overbooked tool components in folder tab AD.
- ü #2158: Support of 9-digit Item No for purchase orders (SBS, 02.09.09)
- ü #2207: Corrected values in "Cost Center Inventory" (Illig, 03.11.09)

### **WinTool CNC Archive**

- ü #2152: Support of WinTool CNC Archive 2009

### **Technology**

- ü #2131: Start-up icon of expert modules display manufacturer logo
- ü #2147: Column headers translatable (Progressive, 13.11.09)
- ü #2209: Faster material selection using Access
- ü #2211: Corrected display when creating new F&S for assemblies with inserts (ap/ae/D/z)

### **Database**

- ü Improved Oracle support (optional module required)
- ü Significantly improved database upgrade functions

### **Components**

- ü #2156: Magnifying glass in folder JPG and 3D works also for released records now (Woodward, 22.09.09)
- ü Updated documentation of recording of components

### **Reporting**

- ü #2186: Measuring points/drawings will not be listed in parts list anymore
- ü #2171: Improved handling of user reports for use in Process Module
- ü #2162: New structure to support customized unload-report

### **Process Module**

- ü #2160: Support of "auto-next"
- ü #2161: Better support of user reports for net-calc lists and unload lists
- ü #2163: Only tool lists are selectable that can be assigned to machines
- ü #2164: New calculation method that assigns tool assembly duplos based on T-Numbers
- ü #2166, #2167, #2168: Adjustments of list display for multiple search windows
- ü #2169: Possibility to set user rights in demo mode
- ü #2170: Correction of display of empty magazine spaces after tools have been unloaded

## **WinTool 2009 SP2**

### **Logistics**

- ü #2046: Corrections for creating new orders (Sorin, 16.07.09)
- ü #2054: "Items per Cost Center" shows wrong values (RST, 24.07.09)

### **Tool Assemblies**

- ü #2044: Dataset locking on assembly drawing import (Progressive, 20.07.09)

## Reporting

- ü #2052: Better Citrix support

## Reports

- ü #2035: Price rounding in orders report (Geberit, 03.07.09)
- ü #2045: New: reports "Supplier" and "Items per Cost Center" (Toshulin, 09.07.09)
- ü #2068: Optimized queries for Tool List reports (Toshulin, 23.07.09)

## Process Module

- ü #2050: Corrected flexible T number assignment (Sorin, 23.07.09)

## Technology

- ü #2048: Error when creating new cut data and entry with value "0" in table "CoolentTypes" missing (Geberit, 14.07.09)
- ü #2049: Calculations don't work after creating new cut data when there already was an entry (21.07.09)

## **WinTool 2009 SP1**

### Logistics

- ü #1866: Compress transactions: Handling of large databases (ETA / Burri, 28.05.09)
- ü #1884: Compress transactions: Keep Price and Order No for ea. supplier (ETA, 04.03.09)
- ü #1867: Bug fix with Goods Delivered count (Geberit, 07.05.09)
- ü #1878: Use better color for "Issue Item" (7.5.2009)
- ü #1883: Bug fix of item information display when double clicking item in list (23.03.09)
- ü #1887: Enhanced detail information in window Pending Orders (Geberit, 23.12.08)
- ü #1890: Display data field UID and Commission.Nr in right order (Geberit, 23.12.08)
- ü #1900: Display Admin No in Inventory Transaction window as well (Reich, 03.05.02)
- ü #1930: Standardized handling of reports for Logistics Module
- ü #1931: Purchase orders: no more duplicate items (ETA, 03.05.02)

### Components

- ü #1870: WTComp.XML: Error message during saving will be intercepted (Progressive, 6.5.2009):
- ü #1871: WTComp.XML StripLine-limit has been changed from 0.01 to 0.005 for imperial measurements (Progressive, 6.5.2009)
- ü #1873: Data overflow in "Seach Matching" has been intercepted (Geberit 04.05.09)
- ü #1921: Enable start up of external application using the button "History" (ISIS, 15.06.09)
- ü #1885: Save FBN: E1 (CMainArc) in the correct data field (SolidCAM, 15.05.09)
- ü #1895: Item No and Product Code are locked in Compact mode (Olympus, 04.06.09)
- ü #1888: User fields can only be edited with the status „edit“ and are locked otherwise (Toshulin, Kempten Manufacturing 04/09)
- ü #1889: Show DXF-Generator button also on the folder "Outline" (Olympus, 26.03.09)
- ü #1899: Correction in the report Technical Data Sheet "MatchCodes" (NORSE, 14.05.09)

### Tool Assemblies

- ü #1868: Automatic saving prior to starting up the DXF-Generator (Berger, WR 7.5.09)
- ü #1876: Bug fix DXF import with SQL Server database (Progressive, 6.5.2009):
- ü #1874: Bug fix report Usage List Components (Geberit, 04.05.09)

- ü #1879: Ignore temporary job lists (Process Module) in report Usage List Components. (Geberit, 04.05.09)
- ü #1886: Update SumArcInfluence when redrawing (15.05.09)
- ü #1891: Use of JPG in tool assemblies (instead of DXF) is possible now (for fixtures or positioning on turret) ( 16.02.09)
- ü #1892: In Settings > DXF Configuration: "Turn on/off option" for automatic cutter length dimensioning of tool assembly drawings (19.01.09)
- ü #1898: Larger drop down menu for Machine Type in tool assemblies (NORSE, 14.05.09)
- ü #1973: No "overflow" during copying of assemblies (Wolfensberger, 26.06.09)
- ü #1974: Tool List order is always correct now.

## Process Module

- ü #1837: Better understandable texts
- ü #1872: Load List: correct translations (5.5.09)
- ü #1922: Pre Setting file is always generated if configured (13.05.09)
- ü #1923: Update with default machine process settings each time when creating a new job.
- ü #1924: Job name must be unique (security during copying).
- ü #1918: Configuration and call up for TAdapt, Duplo.T will be updated. (15.06.09)
- ü #1832: Better information window during load list calculation (Geberit, 05.11.08)
- ü #1925: Better description when generating an unload report (07.04.09)
- ü #1833: Saving selected report automatically in the Job Master configuration (05.05.09)
- ü #1834: Details during loading: The +, -, and \* are used correctly now (Geberit, 04.05.09)
- ü #1835: Crash during selection of locations via filters fixed (Geberit, WG 04.05.09)
- ü #1838: Temporary tool lists will always be deleted (Geberit, WG 04.05.09)
- ü #1840: Double click on Duplo to jump to job added (Geberit 04.05.09)
- ü #1926: Data field "overload" is no longer displayed with machine configuration.
- ü #1839: Display storage location of loaded tools in the report net list (Geberit, 04.05.09)
- ü #1927: Bring Job window always to foreground after selection in search window

## Reporting

- ü #1797: WTComp pictures work also for PDF / DOC formats now (13.03.09)

## Technology Archive

- ü Correct start up of Technology Archive for all languages
- ü #1828: Bug fix of Help function
- ü #1818: Comma (" , ") works also in Germany correctly (12.05.09)
- ü #1912: Better updating of linked data fields when changing cutting conditions
- ü #1678: Coolant type adopted from tool assembly configuration
- ü #1830: Automatic update of cutting conditions after closing cutting data expert software
- ü #1831: Editing cutting conditions in WinTool Compact limited to 200 tools.
- ü #1952: Default selection of latest cutting conditions
- ü #1953: Bug fix when deleting data
- ü #1954: Expert software can be launched even if there is no cutting condition entered
- ü #1955: Display of the coolant type in the list
- ü #1956: Storage of remarks
- ü #1957: Better display of selected material

## Expert (Cutting Condition Calculator)

- ü #1818: Comma (“,”) works also in Germany correctly (12.05.09)
- ü #1819: All user interface texts can be translated now (MH, 10.03.09)
- ü #1692: Error message are now translated in the WTLang (24.03.09)
- ü #1771: Nicer Display of combo boxes (24.03.09)
- ü #1846: Shuts down when closing WinTool (Somatech Dolf, 25.02.09)
- ü #1821: Data can also be stored with tool components now (Somatech Dolf, 25.02.09)
- ü #1831: Editing with WinTool Compact limited to 200 tools (04.03.09)
- ü #1850: For tool type BNJ teeth will be set automatically to 1 (like in BNN) (13.12.07)

## WinTool 2009

### Logistics

- ü Implemented function for recording prices (Pricelist)
- ü Support for transactions from stock to stock
- ü Warning when reaching min stock level when booking
- ü Corrected function "Close purchase order"
- ü Correction in booking assemblies and lists
- ü Support for US-date format when exporting transactions
- ü Corrected indication of "Items per Cost Center"
- ü Correction for viewing the delivery history in shopping cart

### Components

- ü Filter for RC-State when searching
- ü Recording classification now mandatory
- ü Article No queried last when recording new component
- ü Direct call of DXF-Generator from "2D"-Tab
- ü Filter for collision length when searching by class
- ü New Icon for drawing import in "2D"-Tab
- ü No more error message when opening article history with missing Article No

### Tool Assemblies

- ü Support for direct import and editing of DXF drawings
- ü Support for different cooling types
- ü New search method for field "alt. Code"
- ü Adj. angle always supported
- ü Locked components not shown when searching for matching component
- ü Interior coolant now being inherited from components
- ü Button to directly call "Shape"
- ü Optimized filtering for cutting data when searching
- ü Better Tab-Order
- ü Adj. width always supported

## Tool Lists

- ü New datafields for station and orientation of the assembly

## Links

- ü Support for relative links and manual editing of links
- ü Additional links for tool assemblies
- ü Additional link for components
- ü Check of JPG and 3D Links before opening
- ü Check if linked files are existent

## Reporting

- ü New Reporting-System to replace problematic Crystal-Reports solution
- ü Faster rendering of reports
- ü Better resolution of Graphics on reports
- ü Many export formats (XLS, pdf...) included
- ü Much easier creation of user defined reports
- ü Reasonable price for Report-Designer (License needed)
- ü Central activation and supression of barcodes

## Technology-Module and Cutting Data

- ü WT-Technology – new independent module
- ü Materials: New search method
- ü Materials: Filter to only show "own materials"
- ü Expert: New integrated expert to calculate feeds & speeds
- ü Expert: Direct saving of calculated values in tool assembly

## Miscellaneous

- ü New Help-System and updated information
- ü Texts and masks optimized
- ü Improvements in minimizing windows in *WinTool*
- ü More clearly arranged fileds in all windows
- ü Compatibility: SQL-Server 2008 supported
- ü Manufacturer: Export of catalogs now possible when using SQL-Server
- ü Registry: Correction for saving datapath
- ü Shortcut [Ctrl] + [W] for starting *WinTool* removed

## Presetting Module (License needed)

- ü WT-Presetting with integrated DXF-Export

## Revision Control Module (License needed)

- ü WT-RCTool 2.0 – Revised, faster RC management

## Process-Module (License needed)

- ü New module for managing tool assemblies in shop floor
- ü Controlled Job flow
- ü Calculation of net lists
- ü Management of current stock state of tool assemblies
- ü Management of intermediate storages, unload lists and current loading
- ü Integration of presetting

## WinTool 2008 SP2

### Extensions

- ü New WTxTShape Version 2.2
- ü #1571: Report "Tool Sheet" now supports Ident No. with more than 8 characters
- ü #1537: Checking numeric columns (PartPics) on catalogue import into SQL-Server
- ü #1574: Editing of cutdata in compact mode if less than 200 assemblies recorded
- ü #1591: Showing bookings from all users in booking history
- ü Better installation experience acc. Microsoft .NET 2.0 Installation

### Corrections

- ü #1572: Correction to attaching holders to assemblies for machines without clutch
- ü #1575: Better calculation of adjustable diameter for Inch tools for presetting
- ü #1592: Better support for table locking on table "Parts"
- ü #1576: Better support for Server Dongles
- ü #1577: Updating picture tab on change of file link
- ü #1578: Correction to copying / new creation of cut data on SQL-Server

## WinTool 2008 SP1

### Extensions

- ü #1460: Added Tool Assembly remarks to tool sheet
- ü #1461: Bigger / smaller filters added to Tool search
- ü #1470: Faster Tool rebuild
- ü #1471: Faster search for Tool List by Ident
- ü #1472: Showing Length field in search for Components
- ü #1473: Showing Collision Length in search for Tools
- ü #1475: Using Tool Radius in Presetting values
- ü #1478: Easier opening of Components for released / locked Tools
- ü #1480: Showing stock location from components window in stock transactions window
- ü #1482: Showing material, NCP and Machine Type in "ToolLists-Setup"
- ü #1485: new search window: Search by Tool List Description
- ü #1486: Filter by Machine Type in Search for Tool List Ident
- ü #1487: Callback when changing Machine Type in for Tool List
- ü #1488: Filter by Machine Type in Search for Tool ID
- ü #1489: Made Order No. changeable in open orders
- ü #1508: Magnifier + 3D button selectable for released and locked tools
- ü #1509: Tool Description //Design aren't changed when rebuilding
- ü #1510: Info when using too old WTCComp-Version

- ü #1511: More accurate Collision Diameter calculation for Tools if collet chuck used
- ü #1516: Stock: new functions for transaction compression, correction and export
- ü #1477: Saving "PicDraft2" when exporting a new drawing (for update installation: reset WTComp to defaults)
- ü #1518: Showing cutting length in Tool Assembly drawing

## Corrections

- ü #1462: Updating user and date when changing a Component
- ü #1464: Corrected error message when entering too long Tool List Ident
- ü #1465: Corrections for reading dxf-files
- ü #1466: Better support for Adjustable Diameter for Inch Tools
- ü #1468: Drawing generation corrections for integrated pull studs in holders
- ü #1474: Error correction for copying classes with SQL-Server
- ü #1507: Layout corrections
- ü #1526: Correction for opening ToolList with activated Revision-Control

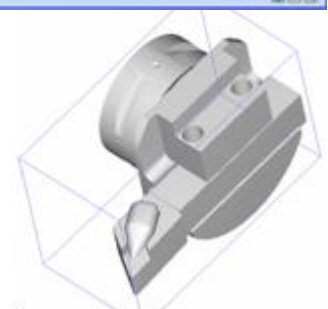
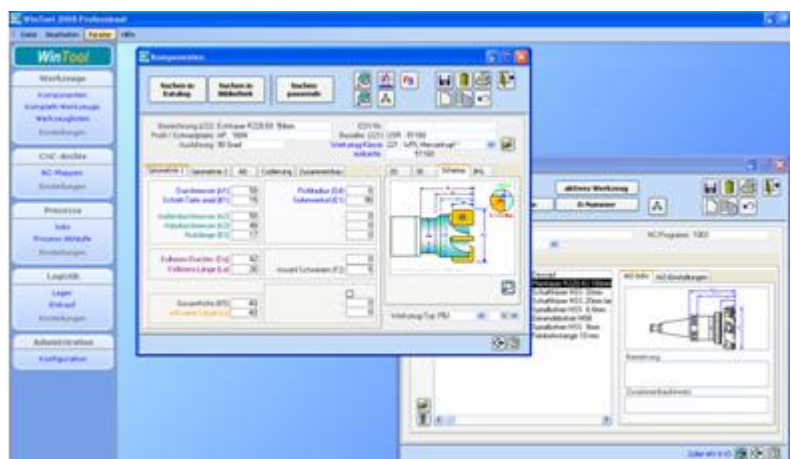
## Changes from *WinTool Fix (April)*

- ü #1422: Some Installations using SQL-Server had problems with "PartPicsBuild" function ("Update or CancelUpdate without AddNew or Edit.")
- ü #1435: Stock: too many columns displayed when booking tool assemblies
- ü #1436: Wrong ToolList-Ident size checked, only ToolLists with 25 characters length could be created
- ü #1437: Ident-No missing on ToolLists-Prepare.rpt
- ü #1438: Catalog import function is trying to read non existent field on SQL-Server
- ü #1439: Error "ODBC-Call failed" on SQL-Server when generating new tool and Revision-Control activated

## *WinTool 2008*

### New

- ü New user interface design of main window and menu.
- ü Improved data field organization in all main tool data tables.
- ü Folder tab with tool outline in component table.
- ü Display of additional JPG- and 3D-files in component table (e.g. turning tool, please refer to WinTool Help section)
- ü 3D-windows in tool assembly window (download a free viewer of STL-files from "<http://www.infograph.com/myriad-2d3d-viewer.htm>")
- ü Overall revision of software text labeling in English



### Changes

- ü #1277: „Changes diameter“ is supported again
- ü #1268: Improved WTComp for correct measurements in Inch

- ü #1282: Delete Link1 / Link2 enabled and aligned to the right
- ü Example for Process Module included
- ü #1285: Editing of PartPics without previous file export enabled
- ü #1295: New fields for Setup Hight, Width, and Angle
- ü #1296: Adjustment Width supported for measuring points.
- ü #1297: Cutting Direction (Tool Assemblies) is not supported anymore
- ü #1292: Frequent error bug in tool list fixed
- ü #1179: WinTool Compact version supports also double-clicking a tool assembly in the Tool Lists to activate the Tool Assembly Window.
- ü If the box "Is measure point" is checked, the item will not be listed in the parts list any longer
- ü #1276: Remarks about Users and Passwords in the Help-file.
- ü Removed top 1000 limitation in "Search Matching"
- ü Fixed bug in WT-Reporting: Error message when multiple linked data Windows have been opened simultaneously
- ü In Search Tool Assembly window the T-number is being displayed in the listing
- ü #1354: Better installation support for Citrix
- ü #1396: Read only viewer for cutting data

## Reporting

- ü New values for generation of graphics (thicker display)
- ü New selection tree distinguishes standard and user-reports
- ü User-reports can also be used with Compact Version
- ü Simplified generation of user reports
- ü User report example added

## **WinTool 2007 SP2 (October 2007)**

- ü Better License management when using Server-Licenses
- ü Orders and Order Suggestion Reports available within WT-Reporting Module
- ü Mailing of Orders reactivated
- ü When assembling tools the assembling remarks are shown before the assembling parameters
- ü Language corrections in NL-tool list Reports

## **WinTool 2007 SP1 (September 2007)**

### Extensions

- ü Support for Reports out of WTPlus via WTUser32
- ü Supporting search for not explicitly fitting components in components window
- ü Providing Jet 4.0 in all WinTool languages in Support directory
- ü 64-Bit support
- ü Editing of F&S locked in Compact mode
- ü Editing of tool assemblies locked if more than 200 are available in compact mode
- ü Matching conditions / Drawing numbers also shown after component update

### Corrections

- ü Copying of tool assemblies supported

- ü Corrections for upgrade from former versions
- ü Corrections in drawing handling
- ü Corrections in tool list reports
- ü Corrections for tool assemblies when SQL-Server is used
- ü Corrections in tool assembly search

## **New Module WT-Reporting 1.5**

- ü Support for 64-Bit Systems
- ü Chosen Report-tree is completely collapsed on startup

## **New Module RCTool 1.4.1**

- ü Better response times
- ü Enhancements in language selection
- ü Window always closes after action

## **WinTool 2007 (July 2007)**

- ü Windows Vista support
- ü MS Access 2003 support
- ü MS SQL Server 2005 support
- ü Code signed with Security Certificate
- ü Installed WTDData DB language selection
- ü New database structure 5.0
- ü Price and weight calculation in tool assemblies reworked
- ü Feeds and Speeds are copied when copying a tool assembly
- ü New database fields (D2/H2, D3/H3) to support offset data for up to 3 measure points
- ü New WT-Reporting (Crystal Reports based) added as standard WinTool module
- ü Feeds and Speeds are copied with Tool Assemblies
- ü File open dialogs for info link fields
- ü Component geometrical fields show up to four digits aft the decimal point
- ü Revision Tracking: Pictures can be locked as well
- ü Bigger remarks field in tool assemblies, „AD“ tab
- ü Bugfix: Tool Assembly drawing and calculating
- ü The documentation for tool geometry standards has been extended

## **Modules**

- ü DXF-Generator 2.7 (*changelog: WT-DXF-Generator-Manual-E.pdf*)
- ü Shape 2.0 (*changelog: WT-Shape-Manual-E.pdf*)
- ü Revision-Tracking 1.3 (*changelog: WT-RevisionTracking-Manual-D.pdf*)
- ü Presetting Tool 1.3 (*changelog: WT-Presetting-Manual-E.pdf*)
- ü WTE0-Technology 2.4
- ü WTUser32 5.0

## **WinTool 2006 SP 5-7**

- ü Bugfix: Tool Assembly drawing and calculating
- ü Enhancement: Search matching components (right)
- ü Enhancement: Search matching (right and left)
- ü #707: Error in Tool Assembly (assembling and redraw)

## **WinTool 2006 SP 4**

- ü #690: T-Nummer=Ident-Nr correctly handled when tool list is updated
- ü #673: Possibility for manual entry of instance name for SQL Server
- ü #520: Assemblies are listed only once when searching by classification
- ü #524: No more long MSI-waiting during Setup
- ü #525: Export / Import of Pricelists enabled
- ü #526: Presetting: Mathematical functions implemented
- ü #526: Presetting: Input X configurable as radius or diameter
- ü #528: Presetting: second and third measuring point exported only if <> 0
- ü #530: Search matching has no more overflow problems
- ü #532: CutData From: Controls are now resizable
- ü #597: Printing parts out of remarks is possible again

## **Comfort SP 4**

- ü #680: WTUser32 on shared net drive supported
- ü #683: Released tool list: Allows to click and see the tool assembly.
- ü #671: SQLClientConnectivity as support files on CD available
- ü #519: Revision control: Data of locked record is written in black (not grey)
- ü #522: Automatic view updating when adding a tool to a tool list
- ü #523: Reference List: Field size adapted
- ü #527: Presetting: Sequence of assemblies can be configured
- ü #533: Prize list: New field "Ostock" is now exported / imported
- ü #599: Search matching too the right supported for assembly-buildup

## **Security SP 4**

- ü #681: No more assemblies can be added to released tool list
- ü #682: Tool list in compact mode is now locked completely
- ü #675: "Setting " can be accessed with administrator rights only
- ü #518: No more changing of user class on released components
- ü #600: Index-module: Links enabled
- ü #602: Extended documentation for copy protection installation
- ü #604: Assembly field DX is updated automatically during redraw

## **WinTool 2006 SP 3 (June 2006)**

### **Extensions**

- ü Search filter to select transaction type added to WinTool Plus
- ü function "book active component" added to WinTool Plus
- ü multiple adaptations in WTLang
- ü MSXML 4 SP2 support files added

### **Corrections**

- ü MSXML 4 SP2 integrated in installer
- ü installer with overwrite-functions

## **WinTool 2006 SP 2 (Mai 2006)**

### **Extensions**

- ü Cutting Data: Manual for Cutting Data in Inch added
- ü WTCFG.ini will not be compressed in installer anymore
- ü New definition file for presetting output "Kelch EA9"

### **Corrections**

- ü Fix in presetting data form (Tool Assemblies)
- ü Int: localization files for catalog creators in WinTool 2006 format implemented

## **WinTool 2006 SP 1 (April 2006)**

### **Feature Extensions**

- ü Cutting Database also in Inch. Can be converted Metric-Inch
- ü Additional data field for Inch-tools: number of threats
- ü The flag 'Transferred' in tool assembly CAM settings will be deleted when tool is redrawn.
- ü In 'search tool assembly by classification': new search filter to display only tool assemblies that have cutting data stored for the selected work material.

### **Corrections**

- ü Bug in WinTool 2006 for SQL Server in cutting data, machine type, and location fixed.
- ü Bug in classification fixed.
- ü Default export path for 'presetting interface data' set to WinTool 2006 software path.
- ü Index module error message in Tool List improved
- ü Bug fixes in Upgrade Wizard.
- ü Bug in machine type selection in Tool Assemblies and Tool Lists fixed

## **WinTool 2006 (Feb 2006)**

### **Operation system and security**

- ü Access Runtime 2000, SQL server, and MSDE compatibility
- ü Upgrade and cross grade wizard
- ü Support for Unicode (i.e. Asian characters)
- ü Security enhancement for System.mdw
- ü "Program files" is new default path for software installation

### **Structural changes**

- ü Extended structure for "Physical Machines" and "Machines with same Holder Type"
- ü Possibility for automatic sequential Ident-No for assemblies with different holders types
- ü Feed and speed archive now also for components
- ü New local and global print reports
- ü Possibility to generate user reports as RTF-File (optional)

- ü New data fields for tool 'Life Time', 'Operation Time', and 'Life Quantity' for each assembly in a tool list

## Functional enhancement

- ü Tool list field 'Description' in tool list extended to 40 characters, 'Identification' extended to 50, and 'Remarks' to 250 characters
- ü Separate configuration for export of assemblies for each CAM interface
- ü In the components masks, each geometry field got a unique code (A1 etc.)
- ü Search matching cutting sides supported for open matchcodes.
- ü Identification of master data is stored when copying a component
- ü New data field for default T-Number (for standard tool assignment in CNC-magazines)
- ü Each component in the folder tab 'tool component list' of assemblies got an adjustable width and angle (important for turning tools)
- ü Hyperlinks to external data files for components, assemblies, and tool lists
- ü Additional search function for tool lists by O-Number
- ü Security prompt when tool list identification is being changed
- ü Additional data fields in assembly record for presetting information
- ü Additional filter to search assemblies by status

## Catalogs

- ü New data field for supplier mail address, price list includes field for stock availability

## Corrections

- ü Stock control: correction in 'cancel' functionality
- ü When copying a component, the stock quantity will not be copied anymore
- ü Changes in classification can not be done with Compact License anymore
- ü No delay when deleting the data path of part pictures
- ü Assembly will not be activated by a single click in the tool list anymore
- ü Assemblies are not blocked for editing anymore, when tool list is active

## WinTool DXF-Generator

- ü Functionality adjusted to match with shape module.
- ü Correction of known bugs.

## New Index Module

- ü Status management with history for components, assemblies, and tool lists
- ü Locking for edit and delete if revision control is active